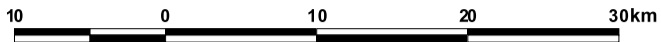




MARY RIVER CATCHMENT DISTURBANCE



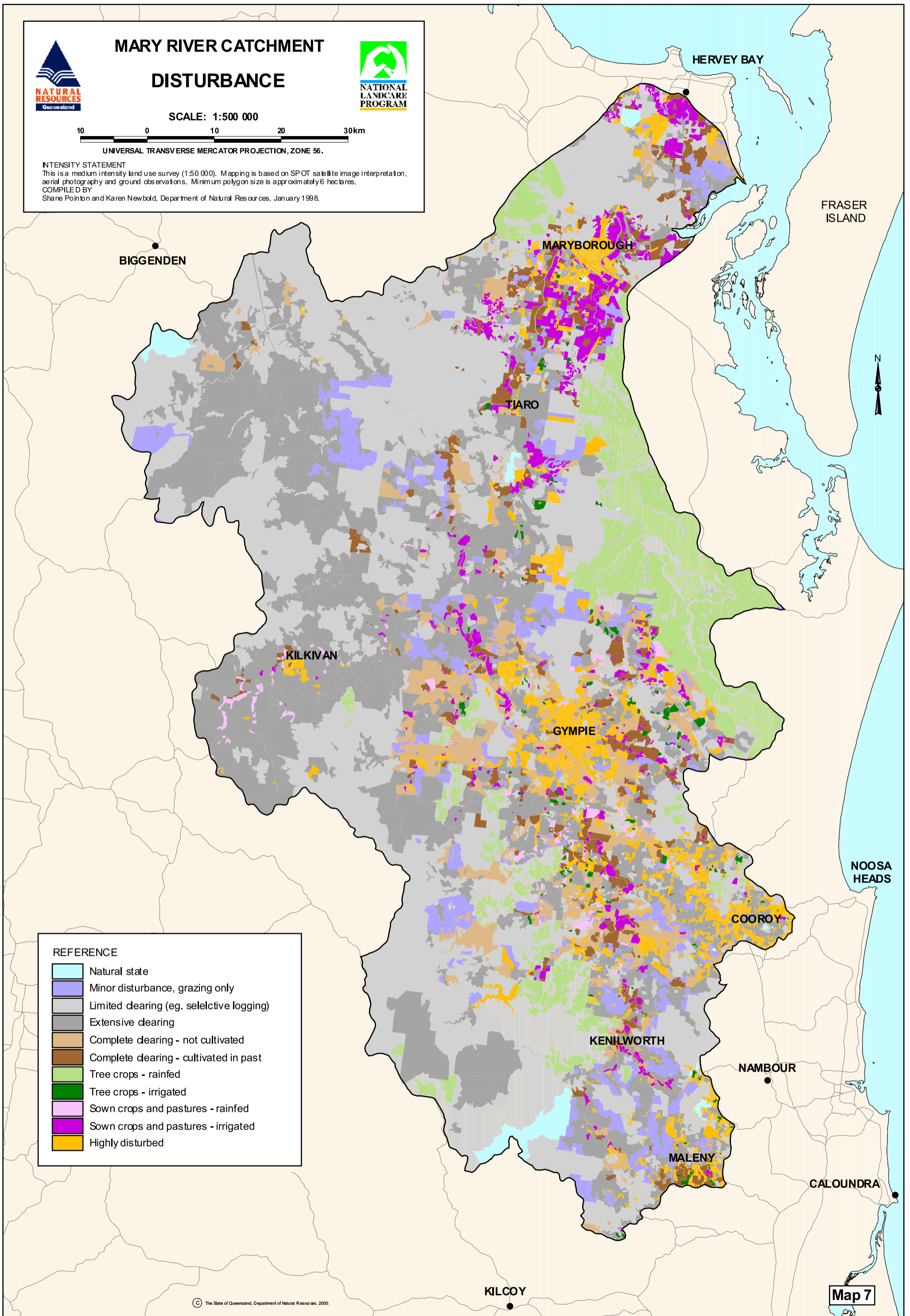
SCALE: 1:500 000



UNIVERSAL TRANSVERSE MERCATOR PROJECTION, ZONE 56.

INTENSITY STATEMENT

This is a medium intensity land use survey (1:50 000). Mapping is based on SPOT satellite image interpretation, aerial photography and ground observations. Minimum polygon size is approximately 6 hectares.
COMPILED BY
Shane Pointon and Karen Newbold, Department of Natural Resources, January 1998.



REFERENCE	
	Natural state
	Minor disturbance, grazing only
	Limited clearing (eg. selective logging)
	Extensive clearing
	Complete clearing - not cultivated
	Complete clearing - cultivated in past
	Tree crops - rainfed
	Tree crops - irrigated
	Sown crops and pastures - rainfed
	Sown crops and pastures - irrigated
	Highly disturbed